



Fall PD Day

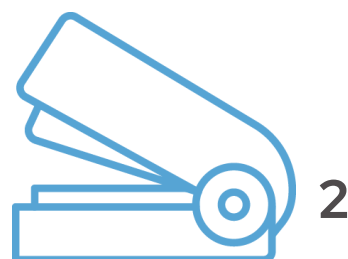
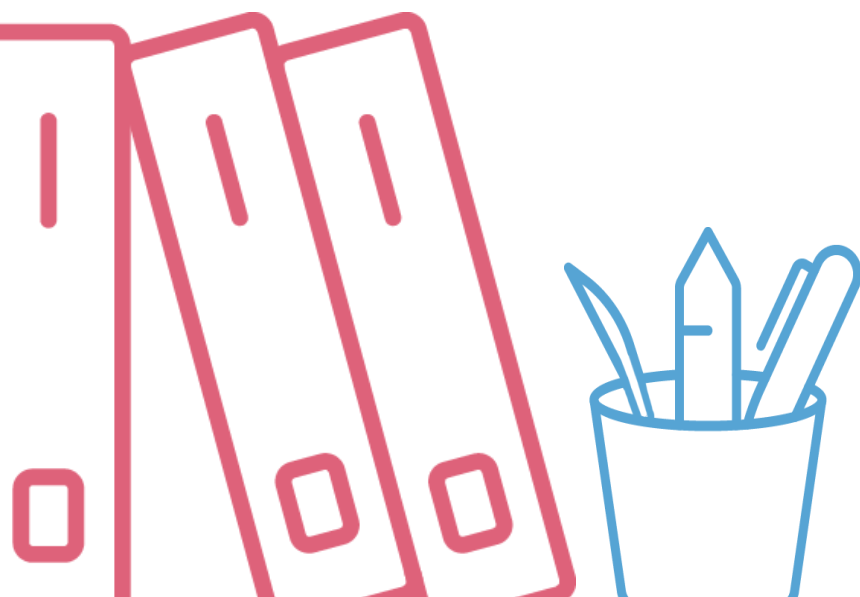
Friday, October 25, 2024

9:00 AM – 3:15 PM

**GRIMSHAW MULTIPLEX &
SHARED SCHOOL FACILITY
4609 50 St., Grimshaw, AB**

TABLE OF CONTENTS

Conference Overview	3
Session Schedule	4-15
Appreciation & Thanks	16
Contact Information	16



CONFERENCE OVERVIEW

The Greater Peace ATA Local #13 Professional Development Committee welcomes all teachers and educational assistants from Holy Family Catholic Regional Division and Peace River School Division register for the fall PD Day in Grimshaw on October 25, 2024.

This year's event is a face to face professional learning day, featuring various presenters from across the province and teachers from your school divisions.

BREAKDOWN

COFFEE

8:30 - 9:00 AM

WELCOME ADDRESS/LAND ACKNOWLEDGEMENT

9:00 - 9:10 AM

SESSION 1

9:10 - 10:15 AM

BREAK

10:15 - 10:30 AM

SESSION 2

10:30 - 11:30 AM

LUNCH

11:30 - 1:00 PM

SESSION 3

1:00 - 2:00 PM

BREAK

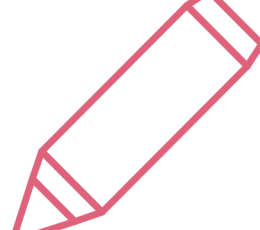
2:00 - 2:15 PM

SESSION 4

2:15 - 3:15 PM



SESSION SCHEDULE



FULL DAY SESSIONS: 9:00 – 3:15 PM

Standard First Aid CPR C with AED

Presented by: Patrick Connellan

Location Venue : Space Filler

This is a Standard First Aid Session with CPR and AED level C. Participants will need to complete an online portion prior to taking the skills session on the PD Day. Registration will be held to a maximum of 16 people and will be closed 1 week prior to the day of the course starting. A minimum of 7 hours is needed to complete the skills session. Participants will also be required to pass a 30 question multiple choice exam (with a 75% or more) and demonstrate all the skills in order to pass. A fee of \$20 will be required for course material and registration.

Building a Restorative Culture in Schools: An Introduction

Presented by: Caroline Gossling

Location Venue : Space Filler

CRITICAL QUESTION: How are you intentionally building and strengthening relationships in your school and community?

This session will provide an overview of principles underlying restorative practices which, when implemented school-wide, result in increased attendance and academic achievement as well as a decrease in disruptive behaviour, conflicts and suspensions.

We will dig deeper into two of the principles; the importance of relationships and engaging all learners. Using restorative questions to address conflict will also be introduced. Participants will leave with strategies that can be implemented immediately.

HALF DAY SESSIONS

NVCI- Safety Interventions: Holding skills

Presented by: Travis Mitten

9:10 – 11:30 AM

Peace River School Division – Boardroom

Please note that this session is for PRSD only and is a double session. This session will be exclusively safety interventions (holding skills). Expand upon learning the disengagement skills. This training explores progressive team response to physical risk behaviors when a restrictive intervention is necessary for safety. Participants will be able to describe and demonstrate proper use of the principles of holding for an individual presenting physical risk behavior's as well as utilize the physical skills review framework to convey reasoning for the level of restriction used as a response to risk presented.

NVCI- Safety Interventions: Holding skills

Presented by: Travis Mitten

1:00 – 3:15 PM

Peace River School Division – Boardroom

Please note that this session is for PRSD only and is a double session. This session will be exclusively safety interventions (holding skills). Expand upon learning the disengagement skills. This training explores progressive team response to physical risk behaviors when a restrictive intervention is necessary for safety. Participants will be able to describe and demonstrate proper use of the principles of holding for an individual presenting physical risk behavior's as well as utilize the physical skills review framework to convey reasoning for the level of restriction used as a response to risk presented.



SESSION SCHEDULE



SESSION 1: 9:10 – 10:15 AM

Professional Learning Community: ECS/Kinder

Location Venue : Space Filler

PLC Session: The goal of this PLC session will be for staff of PRSD and HFCRD to make connections with other colleagues to support the learning and success of all students.

- o These connections will be made through participants bringing one resource, strategy, and/or structure to share with the group.
- o Bring one question you want answered

Based on the questions each participant brings to their session, members will grouped in like cohorts to respond to and discuss resources and strategies that can address participant questions.

Professional Learning Community: Grade 1 & 2

Location Venue : Space Filler

Professional Learning Community: Grade 3 & 4

Location Venue : Space Filler

Professional Learning Community: Grade 5 & 6

Location Venue : Space Filler

Professional Learning Community: Multigrade Div 1 (K-3)

Location Venue : Space Filler

Professional Learning Community: Multigrade Div II (Gr 4-6)

Location Venue : Space Filler

Professional Learning Community: Gr. 7-9 ELA/SS

Location Venue : Space Filler

Professional Learning Community: Gr. 7-9 Math/Sci

Location Venue : Space Filler

Professional Learning Community: Gr. 10-12 ELA

Location Venue : Space Filler

Professional Learning Community: Gr. 10-12 Social Studies

Location Venue : Space Filler

Professional Learning Community: Gr. 10-12 Math

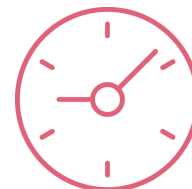
Location Venue : Space Filler

Professional Learning Community: Gr. 10-12 Sciences

Location Venue : Space Filler

Professional Learning Community: French Immersion

Location Venue : Space Filler



SESSION SCHEDULE

SESSION 1: 9:10 – 10:15 AM

Professional Learning Community: Music & Fine Arts

Location Venue : Space Filler

PLC Session: The goal of this PLC session will be for staff of PRSD and HFCRD to make connections with other colleagues to support the learning and success of all students.

- o These connections will be made through participants bringing one resource, strategy, and/or structure to share with the group.
- o Bring one question you want answered

Based on the questions each participant brings to their session, members will be grouped in like cohorts to respond to and discuss resources and strategies that can address participant questions.

Professional Learning Community: CTS

Location Venue : Space Filler

Professional Learning Community: Administrators

Location Venue : Space Filler

Professional Learning Community: Inclusive Education Coordinator

Location Venue : Space Filler

SESSION 2: 10:30 – 11:30 AM

Making the Most of a Teaching Life – How to be Well and Stay Well

Presented by: Tiffany Seymour - [ATA Hosted, Teachers Only \[Virtual\]](#)

Location Venue : Space Filler

CRITICAL QUESTION: How can I thrive and not just survive in my life as an educator?

This workshop will begin by addressing general themes relevant to teacher wellness, and will then focus on the most common mental health challenges affecting teachers: stress, anxiety and burnout. The session will include strategies to assist teachers in managing their emotional and psychological well-being in ways that allow them to be successful in educational settings.

Staff Wellness—Don't Just Survive—Thrive!

Presented by: Stephanie McKay - [ATA Hosted, Teachers Only](#)

Location Venue : Space Filler

CRITICAL QUESTION:

This workshop is designed to help teachers develop an appreciation for how important wellness is for individuals, families and school communities. Participants will have opportunities to reflect on their personal wellness journey and learn about a variety of strategies and resources to assist them. By building our personal capacity, we increase our ability to be of continued service to our students, our families and our society. As the saying goes, "You can't serve from an empty cup."

AI Tools to Amplify Your Professionalism and Save Time

Presented by: Dan Grassick - [ATA Hosted, Teachers Only](#)

Location Venue : Space Filler

CRITICAL QUESTION: How can you make use of generative artificial intelligence tools to help you with your planning and lesson preparation?

Ready to revolutionize your teaching? Join our workshop on AI tools that go beyond traditional lesson planning. Explore how generative AI can create personalized content, assessments, and more. We'll guide you through a process that balances efficiency with creativity, ensuring you remain the architect of exceptional learning experiences. Plus, let's delve into professional considerations—because AI is not just about algorithms; it's about impact.

Please note, it is recommended that participants bring a device to this session, however it is not mandatory.



SESSION SCHEDULE

SESSION 2: 10:30 – 11:30 AM

Où trouver des ressources en sciences, mathématiques et en français en lien avec les nouveaux curriculums M-6?

Presented by: Elyse Morin - [Virtual]

Location Venue : Space Filler

CRITICAL QUESTION:

Cette session vise à guider les enseignants à travers une variété de ressources pédagogiques en français pour les matières de sciences, de mathématiques, et de langue française, adaptées aux nouveaux curriculums pour les niveaux Maternelle à 6e année (M-6). Les participants découvriront des sites web, des livres, des ressources qui répondent aux exigences actuelles des nouveaux curriculums. Des conseils pratiques sur l'intégration de ces ressources en classe seront également partagés, afin de maximiser l'apprentissage et l'engagement des élèves.

Staff Wellness—Don't Just Survive—Thrive!

Presented by: Stephanie McKay

Location Venue : Space Filler

CRITICAL QUESTION:

This workshop is designed to help teachers develop an appreciation for how important wellness is for individuals, families and school communities. Participants will have opportunities to reflect on their personal wellness journey and learn about a variety of strategies and resources to assist them. By building our personal capacity, we increase our ability to be of continued service to our students, our families and our society. As the saying goes, "You can't serve from an empty cup."

AI Tools to Amplify Your Professionalism and Save Time

Presented by: Dan Grassick

Location Venue : Space Filler

CRITICAL QUESTION: How can you make use of generative artificial intelligence tools to help you with your planning and lesson preparation?

Ready to revolutionize your teaching? Join our workshop on AI tools that go beyond traditional lesson planning. Explore how generative AI can create personalized content, assessments, and more. We'll guide you through a process that balances efficiency with creativity, ensuring you remain the architect of exceptional learning experiences. Plus, let's delve into professional considerations—because AI is not just about algorithms; it's about impact.

Please note, it is recommended that participants bring a device to this session, however it is not mandatory.

Scientific Modelling with Gizmos

Presented by: Karen Blumhagen

Location Venue : Space Filler

CRITICAL QUESTION: How can models be used to increase learner interest, engagement and understanding in the science classroom?

Spark interest and engagement by using online simulations to model natural phenomena. Support learners in making sense of complex scientific concepts with visual models. Students develop a deeper sense of how a system works by interacting with variables and observing connections within systems. Best practices for teaching with Gizmos are modeled. Access to Gizmos for K-6 teachers has been provided by Alberta Education. Teachers are encouraged to bring a device.



SESSION SCHEDULE

SESSION 2: 10:30 – 11:30 AM

GeoBoards, Time and Fractions – What the Heck Do These Have in Common???

Presented by: Chris Zarski

Location Venue : Space Filler

CRITICAL QUESTION: How do we provide opportunities for students to see relationships between mathematical tools and concepts?

Just keep rolling up those sleeves and dive in one more time to see how the manipulatives of GeoBoards and Time can connect together. How will we tie fractions into this? Join us and find out!

Introducing the Indigenous Culture Based Learning in Alberta Curriculum Website

Presented by: Kim Barker-Kay & Jason BigCharles

Location Venue : Space Filler

CRITICAL QUESTION: How do we access resources and infuse Indigenous content into curriculum?

Join Jason and Kim to learn how this website can be used within your classroom, your planning, and to deepen your own knowledge and understanding of Nehiyaw (Cree) ways of knowing and being. Explore the rich content that includes general knowledge videos; videos that follow seasonal activities and events; videos and PDFs of stories and legends; curriculum documents with direct links between outcomes and videos; planning samples, instructional supports, and much more. Learn about the Foundations of Cree Ways of Knowing and Being that serve as your starting point in planning.

PRSD Elementary Reporting Process

Presented by: Jessica Whaelan & Claudette Stalker

Location Venue : Space Filler

CRITICAL QUESTION: Are you a Peace River School Division elementary teacher wanting clarification on the new report cards and the process we use to support effective reporting?

In this session, elementary teachers will investigate the resources available to support them with reporting, including the Elementary Teacher Report Card Handbook and the English Language Arts and Literature Report Card Rubrics. We will also explore PowerSchool and how to write effective comments. While this session will target resources specific to Peace River School, it is open to anyone.

Off-Campus Best Practices

Presented by: Scott Randall

Location Venue : Space Filler

CRITICAL QUESTION: What are the best practices for off-campus education?

This will be a session where work experience, RAP, Green Certificate and Dual Credit will be discussed. Careers representatives will also be in attendance. Bring your best practices, your frustrations and your questions!

Getting the Most out of your ELAL Block: Covering the ELAL Curriculum

Presented by: Angela DesBarres

Location Venue : Space Filler

CRITICAL QUESTION: How do I cover all of the ELAL curriculum in my week, month, year?

How do I cover all of the ELAL curriculum in my week, month, year? Designing a structure, routine, schedule for your ELAL block will provide you the framework for covering the ELAL curriculum. Join Angela DesBarres in examining how this can be done. We will look at some exemplar schedules from around the province and you will have time to tweak your current schedule or completely build a new one.



SESSION SCHEDULE

SESSION 2: 10:30 – 11:30 AM

Women in Leadership PLC

Presented by: Julia Cetra-deVries, Ashely Wiggs and Genna Davidge-Smith Location Venue : Space Filler

CRITICAL QUESTION: What does Women in Leadership (WIL) mean to you? How can the WIL committee help you?

Greater Peace Local 13 has formed its first Women in Leadership Committee. We would like to gather people who are interested in being a part of the committee's work by forming a Professional Learning Community. Come to our session to meet each other, share ideas and help your Women in Leadership Committee plan its work for the year.

Help! I have to teach K-3 Music

Presented by: Joyce Holoboff Location Venue : Space Filler

CRITICAL QUESTION: How do I teach and meet music curricular objectives when I am not a music specialist?

Help! I have to teach K- 3 Music – Not a music specialist but teaching music? Need some new ideas for music classes that you're currently teaching? Then this session is for you! Joyce will arm you with songs, games, activities and strategies to turn you from terrified to terrifically confident. You'll leave with a handout filled with tips for teaching, reinforcing, and assessing music concepts and skills. If you've never taught music or are a reluctant singer, you will learn strategies to have you and your students loving music time!!

Think FASD, Think Brain!

Presented by: Jen Duperron-Trydal Location Venue : Space Filler

CRITICAL QUESTION: What are strategies that can actually change and improve, not only behaviours, but academic outcomes of students with FASD?

Attend this session to learn research-backed strategies that will help you and your students with FASD obtain maximum success. (These are universal strategies that will also help the remainder of your students as well!) Areas that will be discussed are different areas of the brain that can be affected by prenatal alcohol consumption, metacognition, sequencing, as well as basic strategies for achievement in areas such as literacy, mathematics, and science.

Teaching Combined Grades: Tools and Resources for Success (K-9)

Presented by: Wanda Dechant Location Venue : Space Filler

CRITICAL QUESTION: How can you leverage overlapping outcomes between two grades to support differentiation and meet the diverse needs of students?

As you approach two months into the school year, are you looking for ways to enhance your combined grade planning? This session, designed for K-9 teachers, will explore practical resources to support your teaching in a classroom with 2 combined grades. We'll highlight tools to identify overlapping outcomes and show how AI can assist in scaffolding and extending tasks, making it easier to engage both grades simultaneously.

Student-Driven Learning: Designing Real-World CTS Experiences

Presented by: Jeanne Lawrence Location Venue : Space Filler

CRITICAL QUESTION: How do we make learning meaningful in CTF?

In this session, we will explore strategies for designing self-directed, meaningful CTS credits that engage students in personalized learning. The focus will be on empowering students to choose areas they are passionate about and developing projects that are relevant to their real-world lives. As educators, our role shifts to guiding students by finding practical, accessible resources that support their learning goals and are applicable beyond the classroom. Join us to discover how to create flexible, student-driven CTS experiences that not only meet curriculum requirements but also prepare students for success outside of school.

SESSION SCHEDULE



SESSION 3: 1:00 – 2:00 PM

Resilience and Regulation—Supporting Students with Challenging Behaviour

Presented by: Tiffany Seymour – **ATA Hosted, Teachers Only [Virtual Only]** Location Venue : Space Filler

CRITICAL QUESTION: *What does challenging behaviour communicate to us as educators?*

Join us for an interactive and empowering workshop that explores strategies for supporting students through challenging behaviours. This session focuses on approaches that cultivate student resilience, as well as strategies to support our own resilience as we respond to challenging moments of student behaviour. Through activities, discussion, and reflection, we will explore a variety of techniques that support students with challenging behaviour and care for our own wellbeing, at once.

When Students Get in Trouble—Alternatives to Consider

Presented by: Stephanie MacKay – **ATA Hosted, Teachers Only** Location Venue : Space Filler

CRITICAL QUESTION:

When students misbehave, numerous people are impacted and involved. This workshop will look at the factors that may be behind the behaviour, choices school staff have when responding, and ways to restore relationships and provide restitution. Topics covered will also include the value of positive culture, conscious connection and accountability.

Free Tools and Kits for Use with Students

Presented by: Dan Grassick – **ATA Hosted, Teachers Only** Location Venue : Space Filler

CRITICAL QUESTION: *How can you use constructionism and maker space approaches to create engaging student-focussed activities?*

Imagine your classroom with challenges to solve, opportunities to create and students who are engaged. In this session, participants will have HANDS ON experience with a number of engaging kits to promote interactive learning. Throughout the session, you will have an opportunity to EXPLORE, CREATE and PLAY! Any member can sign out all demonstrated kits and books FREE from the ATA library. Participants should come with a mobile device to navigate the Association library and begin requesting materials before they leave the workshop. Every teacher is guaranteed a take-away!

Build Conceptual Understanding Using Online Math Simulations

Presented by: Karen Blumhagen Location Venue : Space Filler

CRITICAL QUESTION: *How can online simulations foster mathematical thinking and discourse in young learners?*

Discover how Gizmos online simulations can encourage young students to think like mathematicians. Explore the use of online simulations to enhance conceptual understanding, fostering student confidence in mathematics. Engage in a structured lesson aligned with the new Division 1 math curriculum, and access ready-to-use Gizmos classroom resources. Access to Gizmos for K-6 teachers has been provided by Alberta Education. Teachers are encouraged to bring a device.

Place Value is More Than Numbers in a Column!

Presented by: Chris Zarski Location Venue : Space Filler

CRITICAL QUESTION: *What are the aspects of Place Value that I should assess to know whether my students understand the meaning of place value?*

How do you really know what your students understand about Place Value? It is such an important concept that we spend time developing over a child's education. This session will look at what the key aspects of place value are and how ALL 6 need to be mastered for us to claim our students KNOW Place Value. We will work alongside manipulatives and examples to highlight the aspects and share an assessment tool that you can use with your students to check for understanding. Get ready to roll up your sleeves!

SESSION SCHEDULE



SESSION 3: 1:00 – 2:00 PM

Out of the Box and Into the Barnyard

Presented by: Jennifer Daniel

Location Venue : Space Filler

CRITICAL QUESTION: How to foster critical thinking in students so they can contribute meaningfully to the future of sustainable communities and gain potential life skills?

Join me for an engaging session where I'll share my journey of learning to care for livestock and how it has shaped my approach to grassroots project-based education. We'll explore how to design educational experiences that not only address local needs but also cultivate problem-solving skills in students. Discover how multi-modal and multi-age learning opportunities can inspire innovation and sustainable practices within our communities. Along the way, I'll share my successes and challenges and sprinkle in a few entertaining anecdotes, including the tale of the "Bruces."

K-3: A Poem a Week

Presented by: Angela DesBarres

Location Venue : Space Filler

CRITICAL QUESTION: How will using a poem a week with students help you to teach the ELAL outcomes?

In this session, Angela will share with you a tried, true and tested schedule for teaching the poetry outcomes AND many other ELAL outcomes just by planning daily enjoyable poetry lessons with your students. Participants will walk away with a weekly template of activities for teaching poetry.

Simplifying Reading Intervention: Practical Strategies for Supporting Readers in Gr. 3+

Presented by: Lorraine Ungarian

Location Venue : Space Filler

CRITICAL QUESTION: With so much curriculum content to cover, how can I find the time to support struggling readers when my focus needs to be on more advanced subjects?

In this session, we will explore the critical role grade 3+ teachers play in continuing to teach reading, even when students are expected to have mastered the skill. Many teachers question whether it's still their job to teach reading or worry that they don't have time to address struggling readers while covering important subject content. However, by embracing the opportunity to provide consistent and meaningful reading instruction, you can make a profound difference in your students' overall success.

AI and "backend teaching", tools to take some things off your plate

Presented by: Andrew Bullen

Location Venue : Space Filler

CRITICAL QUESTION: How can we leverage AI to take some of the tedious and boring tasks off our plate as educators, while modelling good habits for our students?

In this session we will discuss tools which you can use to help with marking, administrative duties, lesson planning, and assessment.



SESSION SCHEDULE

SESSION 4: 2:15 – 3:15 PM

AI in the Classroom, Amii Resources

Presented by: Sandra Ciurysek

Location Venue : Space Filler

CRITICAL QUESTION: *What is my role and responsibility in engaging with AI with students in the classroom?*

Teachers and schools are uniquely positioned to help students minimize the pitfalls and maximize the positive benefits of this AI technology, both now and in the future. Join us for an overview of the free Amii (Alberta Machine Intelligence Institute) resources and lesson plans to support AI literacy in the K-12 classroom.

Tend the Garden—Starting and Sustaining Change in Schools

Presented by: Henry Madsen – [ATA Hosted, Teachers Only](#)

Location Venue : Space Filler

CRITICAL QUESTION:

Do you have a project, program, or initiative you'd like to get started? Join this session to explore the science behind what makes short- and long-term programs, projects and initiatives successful. This discussion-focused session will lead you through the process for planning, implementing and sustaining a successful program over time. Participants are encouraged, but not required, to bring ideas for programming, projects, and initiatives they would like to implement in their own context.

Full Circle—Understanding Social Implications of Indigenous Realities

Presented by: Cheryl Devin & Dusty Sage – [ATA Hosted, Teachers Only](#)

Location Venue : Space Filler

CRITICAL QUESTION:

This workshop will examine core causes of intergenerational trauma, challenge common myths and misconceptions, as well as explore activities to foster effective relationships with First Nations, Métis and Inuit students, families and community. Participants will explore assimilation strategies that have contributed to many current realities of Indigenous students, families and community. You will gain an increased understanding of physical, mental, social and spiritual impacts, and strength-based initiatives to contribute to the advancement of the reconciliation process.

Solve Real-World Problems Using Gizmos STEM Cases

Presented by: Karen Blumhagen

Location Venue : Space Filler

CRITICAL QUESTION: *How can teaching with case studies support students in building critical thinking skills and what is the teachers role in the process?*

Facilitate STEM learning in an engaging way with ExploreLearning Gizmos, the 2024 CODiE Award Winner for Best STEM Instructional Solution for Grades K-12! STEM Cases place students in the role of a professional to solve a real-world problem using critical thinking skills. Explore a STEM Case and reflect upon the role of the teacher during the experience. Learn how to monitor student progress and results to facilitate learning throughout the process. Access to Gizmos for K-6 teachers has been provided by Alberta Education. Please bring an electronic device to get the most out of this session.

On Common Ground – Math and Science in Kindergarten

Presented by: Chris Zarski

Location Venue : Space Filler

CRITICAL QUESTION: *How do Kindergarten students connect and see the relationships between the concepts in Mathematics and Science?*

This session will explore examples of how we can introduce and teach our concepts in science within Matter and Earth Systems for example with Organizing Ideas in Mathematics. Participants will go through the activities in small groups so as to better understand the relationships being modelled as well as to reflect on how the activities could be adapted in their own classes.

SESSION SCHEDULE



SESSION 4: 2:15 – 3:15 PM

Student Pod Casts and Engaged Learning in English Language Arts

Presented by: Kellie Coen and Marni Mingay

Location Venue : Space Filler

CRITICAL QUESTION: How do you make sure that the student in your English class truly understands the depth of the novel study you are trying to get them to read and comprehend?

In a novel study, imagine your students actively discussing themes, motifs, settings, and character development without it being led by the teacher. Making students accountable for their understandings by having them produce weekly podcasts based on their reading and understanding of the novel lets them take charge and engage in their own understanding of what they are reading.

Unstructured Math Collaboration Gr. 5-9

Presented by: Wendy Pimm

Location Venue : Space Filler

CRITICAL QUESTION: Do you need more time to talk to others about teaching Fractions and Integers? Are you interested in spending time talking about what works for you and what doesn't?

Time to discuss Math (specifically Fractions and Integers) with other math teachers. Bring your own ideas of what is working well and find some help for other things. Led by 3rd year teacher for Jr high.

Help! I have to teach Gr 4/5 Music

Presented by: Joyce Holoboff

Location Venue : Space Filler

CRITICAL QUESTION: Where can I find resources to make music interesting and enjoyable for my students?

Need some new ideas for music classes that you're currently teaching? Then this session is for you! Joyce will arm you with songs, games, activities and strategies to turn you from terrified to terrifically confident. You'll leave with a handout filled with tips for teaching, reinforcing, and assessing music concepts and skills. If you've never taught music or are a reluctant singer, you will learn strategies to have you and your students loving music time!!

Quizizz: Data driven formative assessment

Presented by: Andrew Bullen

Location Venue : Space Filler

CRITICAL QUESTION: How can the quizizz toolset help reduce backend workload for formative assessment?

In this session participants will be given a run through of how the more advanced features of the quizizz toolset function. Including a Rundown of AI features, the free for schools program, and best practices gleaned from years of use.

Elementary Basketball Jr NBA

Presented by: Jordan Loughlin

Location Venue : Space Filler

CRITICAL QUESTION: How can I make teaching basketball skills in PE more engaging and fun for all of my students?

Discover the ultimate session focused on teaching basketball to elementary students. Engage all skill levels with fun and interactive basketball drills and mini-games. Learn innovative techniques to inspire young athletes, create an enjoyable experience, and foster teamwork. Enhance your teaching toolkit and leave with strategies to create an unforgettable basketball journey for your students. Join in and take your basketball sessions to the next level. Don't miss out!



SESSION SCHEDULE

DOUBLE SESSIONS: 1:00–3:15 PM

Nouveau curriculum en français immersion et littérature – Aidez-moi !

Presented by: Diana Boisvert & Andrea Couture

Location Venue : Space Filler

CRITICAL QUESTION: Comment vous assurer de bien comprendre le nouveau curriculum afin que vos élèves aient le plus de succès possible ?

Participez à cet atelier interactif animé par Andrea Couture et Diana Boisvert pour explorer les éléments clés du nouveau programme FILAL. Découvrez des outils et stratégies pratiques pour intégrer ce programme dans vos pratiques pédagogiques. Vous aurez également du temps pour travailler et poser vos questions.

Planning with the Indigenous Culture Based Learning in Alberta Curriculum Website

Presented by: Kim Barker-Kay & Jason BigCharles

Location Venue : Space Filler

CRITICAL QUESTION: How do we put infusing Indigenous ways of knowing and being into practice in the classroom?

Join Jason and Kim to build a lesson plan and/or unit plan with the rich content of this website: general knowledge videos; videos that follow seasonal activities and events; videos and PDFs of stories and legends; curriculum documents with direct links between outcomes and videos; learning guides; planning templates; instructional supports, and much more. Using the Foundations of Cree Ways of Knowing and Being as your planning base, you will navigate your way through the website to infuse Indigenous ways of knowing and being directly into your planning. You will leave with both plans and a deeper understanding of what it means to infuse Indigenous knowledge into the curriculum.

Caring For The Educator: Self-Care In The Increasing Era Of Compassion Fatigue And Burnout

Presented by: Marcia Buhler [Virtual Only]

Location Venue : Space Filler

CRITICAL QUESTION: What feelings, thoughts, or reactions come up for you when you hear the term self-care?

Classrooms have become larger with children who seem to have more complex needs. We know that this can take an emotional toll on educators. In this presentation we will explore the importance of self-care, what is compassion fatigue and burnout and what are the symptoms. We will then consider researched strategies to help you engage in effective self-care. This presentation has several reflective exercises and questions to help build on the research material.

Equity, Diversity, and Schools: Reflections for School Professionals

Presented by: Tammy Novak

Location Venue : Space Filler

CRITICAL QUESTION: How can you achieve equity, using strength-based approaches, to improve support for the students in your classroom, as well as across the broader school community?

In every classroom and school, there are students who come from households that experience stress, income instability, household food insecurity, differing mental and physical abilities, and other related challenges. In this session, we use an equity lens to explore how schools can improve their support for these students and their families by incorporating inclusive activities and curriculum. Using scenarios, we will consider strengths-based approaches to reduce adverse impacts on well-being and learning outcomes.

Deepening your foundational knowledge through Beading!

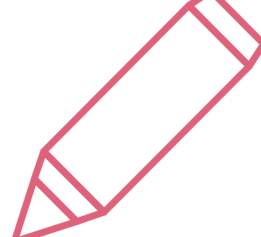
Presented by: Holly Crumpton & Lulu Ostrem

Location Venue : Space Filler

CRITICAL QUESTION: What can you learn about First Nations culture and values by completing a beading project?

This will be an opportunity to complete a small beading project. Participants will gain a deeper understanding of the skills necessary in order to complete a beading project. This will enhance your understanding of, and respect for an art form valued highly in First Nations and Metis culture. Participants will be making a beaded pin that they can wear in the classroom to show students that you personally value Indigenous art. The session will give you the skills and knowledge to be able to complete this project with the students in your class.

SESSION SCHEDULE



DOUBLE SESSIONS: 1:00–3:15 PM

Multi-Grade Math - K-9

Presented by: Wanda Dechant

Location Venue : Space Filler

CRITICAL QUESTION: How can you efficiently identify overlapping outcomes between two grades and plan learning experience to support struggling students and advanced students across the two grades?

As you approach two months into the school year, are you looking for ways to enhance your combined grade planning? In this two-hour session, designed for K-9 teachers, we'll explore practical resources to support your teaching in a combined grade classroom. We'll highlight tools to identify overlapping outcomes and show how AI can assist in scaffolding and extending tasks to engage both grades simultaneously.

To ensure the strategies and resources stick, you'll have time built in to explore the tools, begin your planning, and tailor ideas to your specific classroom context. By starting right away, you can make sure the information is fresh and actionable for your students. Bring your computer!

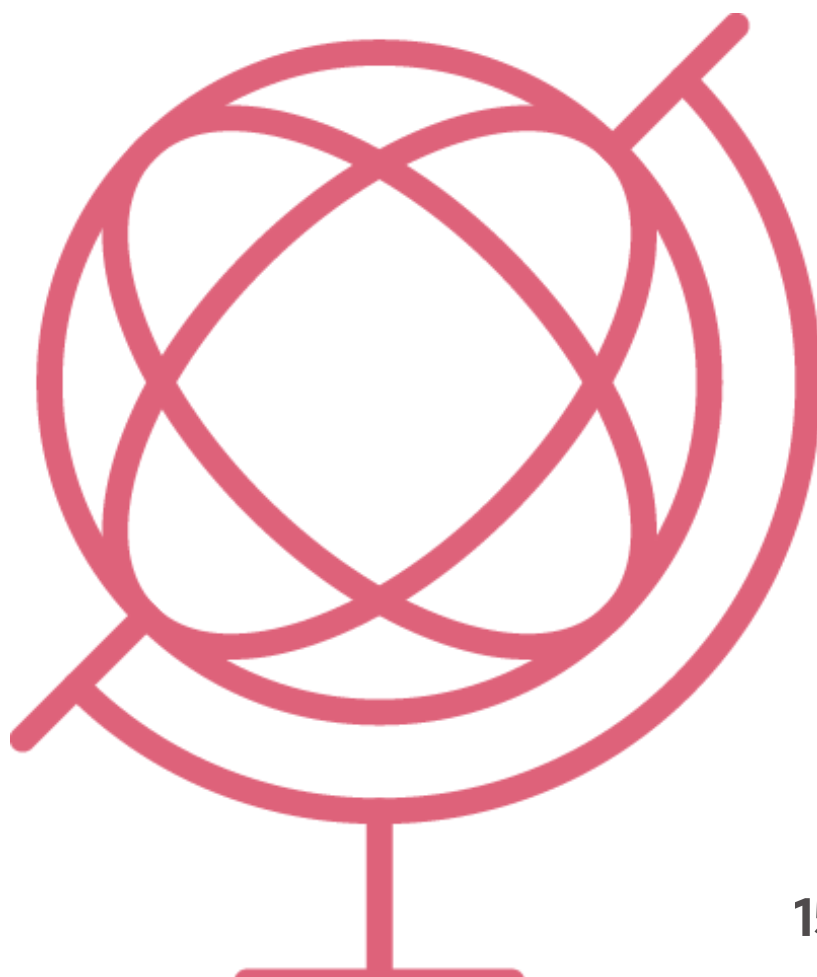
Neurodiversity in The Classroom + The Benefits of Therapeutic Play

Presented by: Emily Ann Elliot

Location Venue : Space Filler

CRITICAL QUESTION: How do we create and maintain inclusive classrooms and utilize alternative methods of support or learning to best accommodate students?

Overview of neurodiversity in the classroom, different types of neurodiversity, basic supports or classroom accommodations for neurodiversity, therapeutic play interventions, the importance of play in childhood development.



THANKS & APPRECIATION



We recognize each and every person who has contributed to this day full of learning, connecting, and building relationships to engage students. We hope you all leave feeling energized and enlightened.

We thank all of the presenters and hope that each has impacted your role as a Teacher/Educational Assistant. Please show them your appreciation throughout the day. Sessions will start promptly at the posted time.

Thank you to all of our room hosts, school hosts, and representatives.

Thank you for completing your breakout session evaluations, your well expressed thoughts will help guide us in future conference development.



CONTACT INFORMATION

If you have any questions or concerns, please email nrlc@aplca.ca

Sandra Ciurysek, Director

Northwest Regional Learning Consortium (NRLC)

sandra.ciurysek@aplca.ca

780-618-9585

